

# Grand Rapids Public Utilities

January 24, 2024 Commission Meeting

Department Head Presentation

Steve Mattson – Water & Wastewater Department Manager



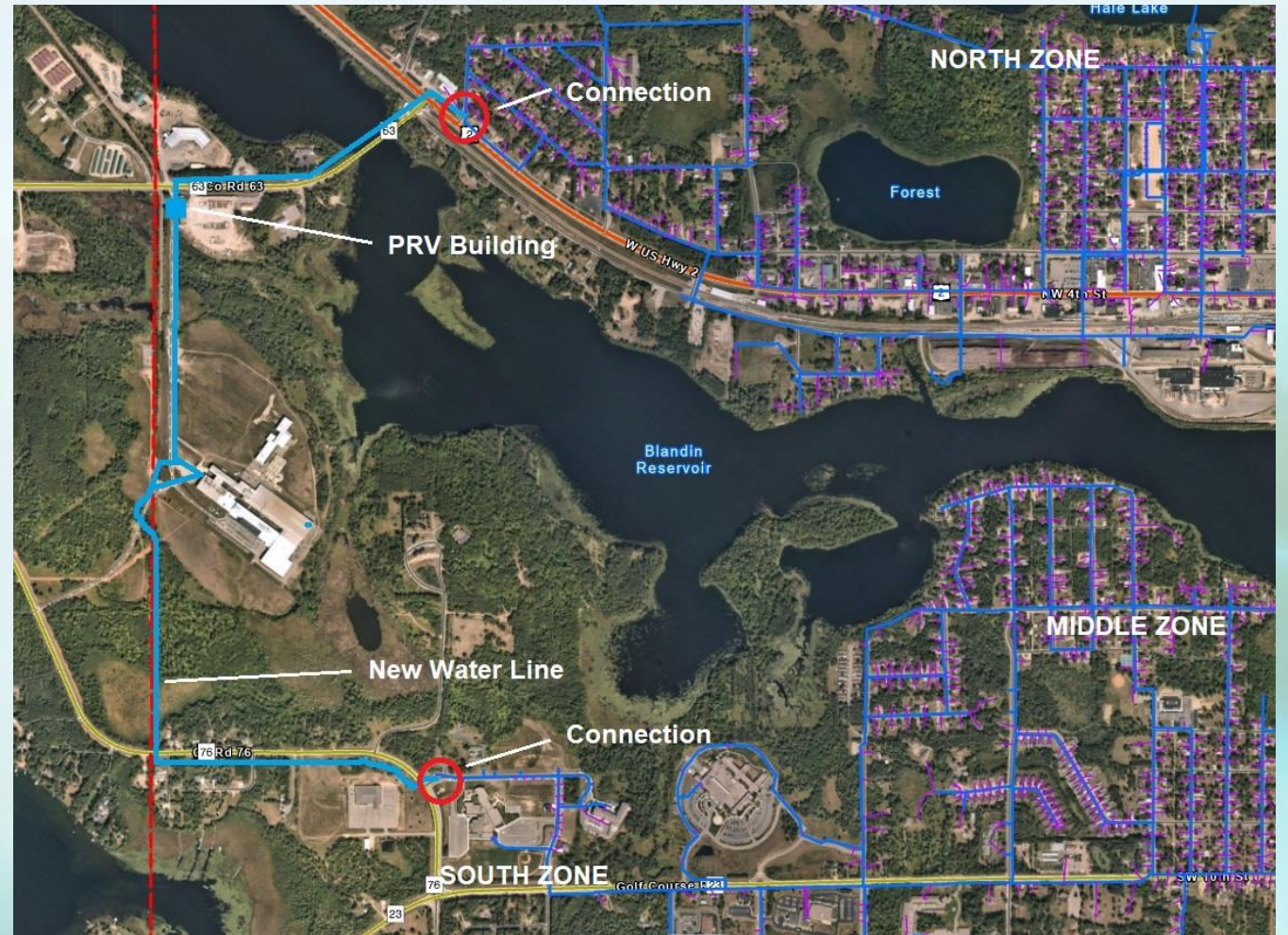
**GRAND RAPIDS  
PUBLIC UTILITIES**

*Service is Our Nature*

# GRPU Water — Grand Rapids / Cohasset Industrial Park

## Project Update

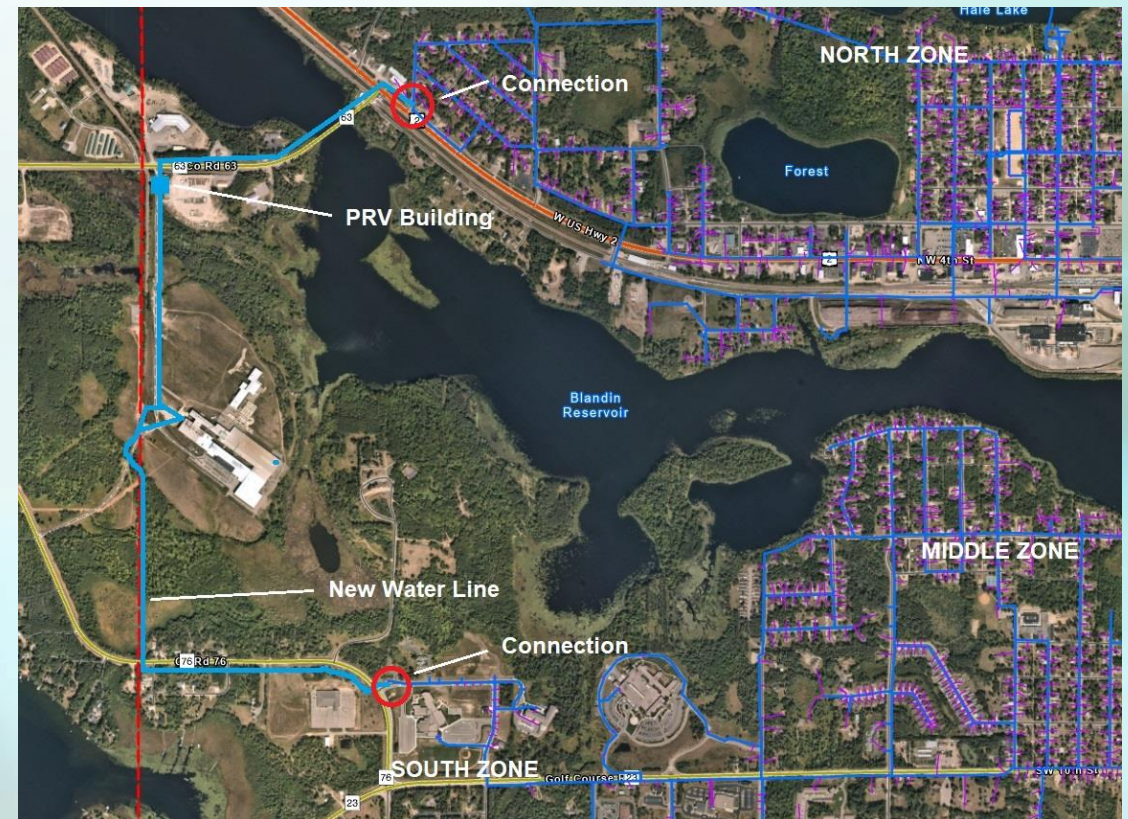
- Grand Rapids Economic Development Authority (GREDA) Project
- \$5.5 million
- Funding - Federal EDA, DEED, GRPU, City of Grand Rapids, IRRR, IEDC, City of Cohasset
- Goal was to get utilities to the site.
- For GRPU, an additional river crossing.
- BMP – Looping within system.
- Online 1/11/24



# GRPU Water — Grand Rapids / Cohasset Industrial Park

## Project Update continued

- 12,600 linear ft (2.4 miles) of 12-inch HDPE water pipe
- BMP – Loop, keep water moving. No dead-ends, no stagnant water etc.
- Tied low and high-pressure zones together
- Pressure reducing valve (PRV) station.
- Allows flow in both directions.



# GRPU Water– Legionella Discussion

What and where is it?

- ◆ Legionella is a bacteria that lives in soil and fresh water.
- ◆ Found at low concentrations in any public water system.
- ◆ Thrives in 77°F to 120°F stagnant water.

Why is this of concern?

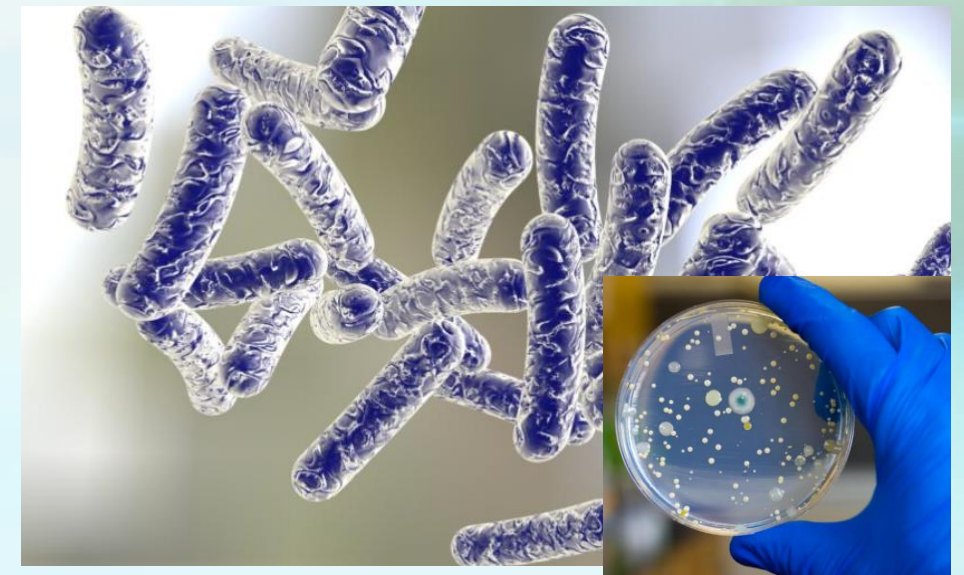
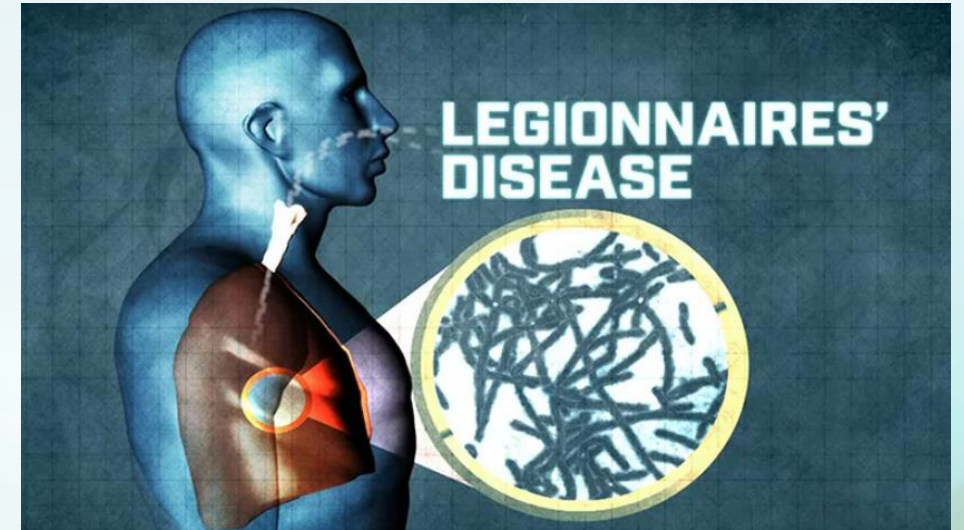
- ◆ Legionella Pneumophila (LP1) – Legionnaires' disease (bacterial pneumonia), Pontiac fever (flu-like)

How it spreads?

- ◆ Inhalation of aerosolized water droplets of water containing the bacteria.
- ◆ You **cannot** get Legionnaires' disease by drinking water that has Legionella. (MN Dept of Health)
- ◆ It is **not** spread person to person. (MN Dept of Health)

What kills it?

- ◆ Heat, Chlorine, Chlorine Dioxide, Ultraviolet



# GRPU Water– Legionella Discussion

## Legionnaires' Cases in GR (Department of Health)



Where are cases typically found?

- 💧 Cooling towers, decorative fountains, hot tubs, building plumbing systems, showers. Can travel airborne 3.5 miles from source. (Journal of Infectious Diseases)
- 💧 MDH investigation couldn't find typical sources as a cause that that aligned with cases in our area.



Source: towertechindia.com

# GRPU Water– Legionella Discussion

- ◆ MDH reached out to GRPU because they concluded no common source was identified among the cases other than exposure to the municipal water supply.
- ◆ MDH conducted sampling in December 2023 of GRPU municipal water supply.
- ◆ Testing results showed negative for LP1 in all samples taken at WTP and in distribution mains.
- ◆ Testing results showed positive for LP1 in 3 samples taken in 2 premise buildings connected to the municipal water supply.



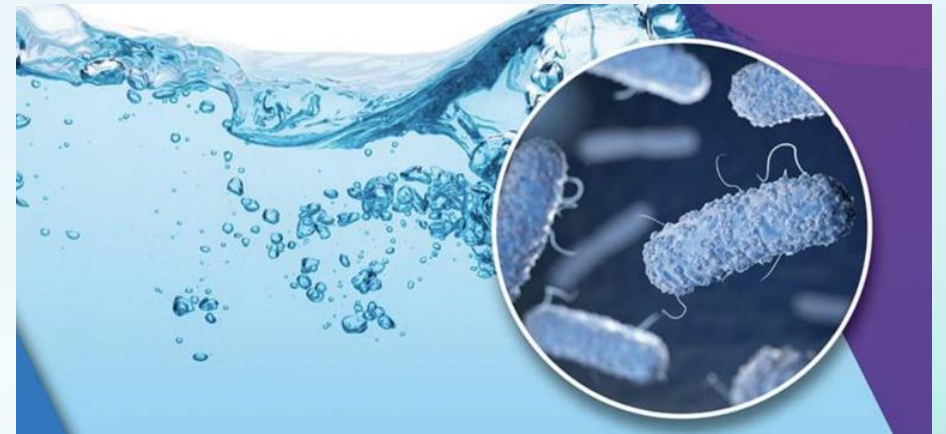
# GRPU Water– Legionella Discussion

## Post Sampling Investigation.

- Virtual meeting with 20 experts from MDH Epidemiology, MDH Public Water, CDC, EPA Office of Water, U of MN to review results and brainstorm possible causes and potential solutions.

## What's next?

- Work with MDH on additional sampling.
- Develop interim chlorination process.
- Incorporate permanent chlorination in WTP Reno.
- Provide communications to residential and commercial customers to minimize their risk from Legionella.



Any questions contact Julie Kennedy 218-326-7687 or [jakennedy@grpuc.org](mailto:jakennedy@grpuc.org)

# Questions / Comments

January 24, 2024 Commission Meeting

Department Head Presentation

Steve Mattson – Water & Wastewater Department Manager



**GRAND RAPIDS  
PUBLIC UTILITIES**

*Service is Our Nature*