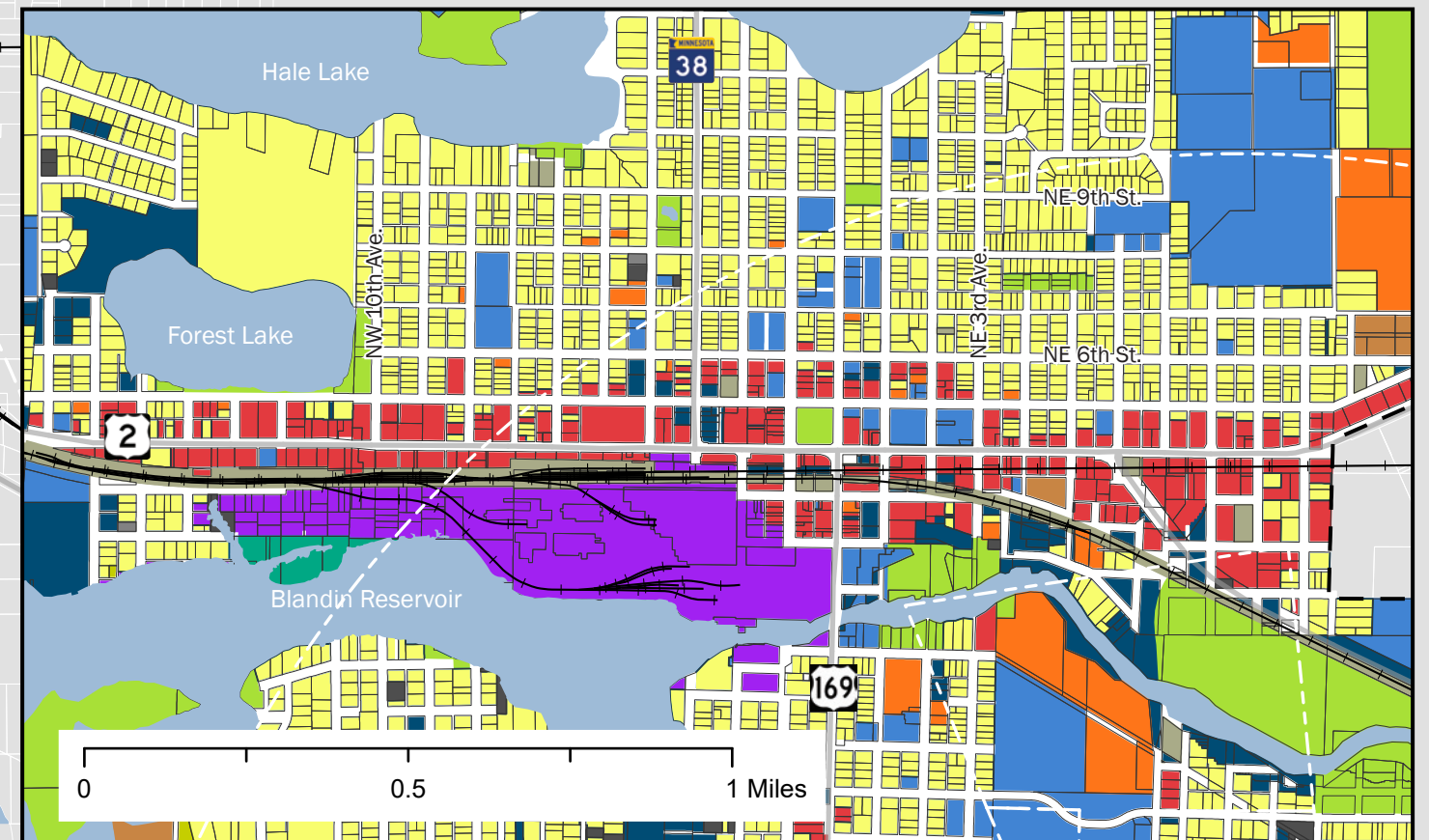
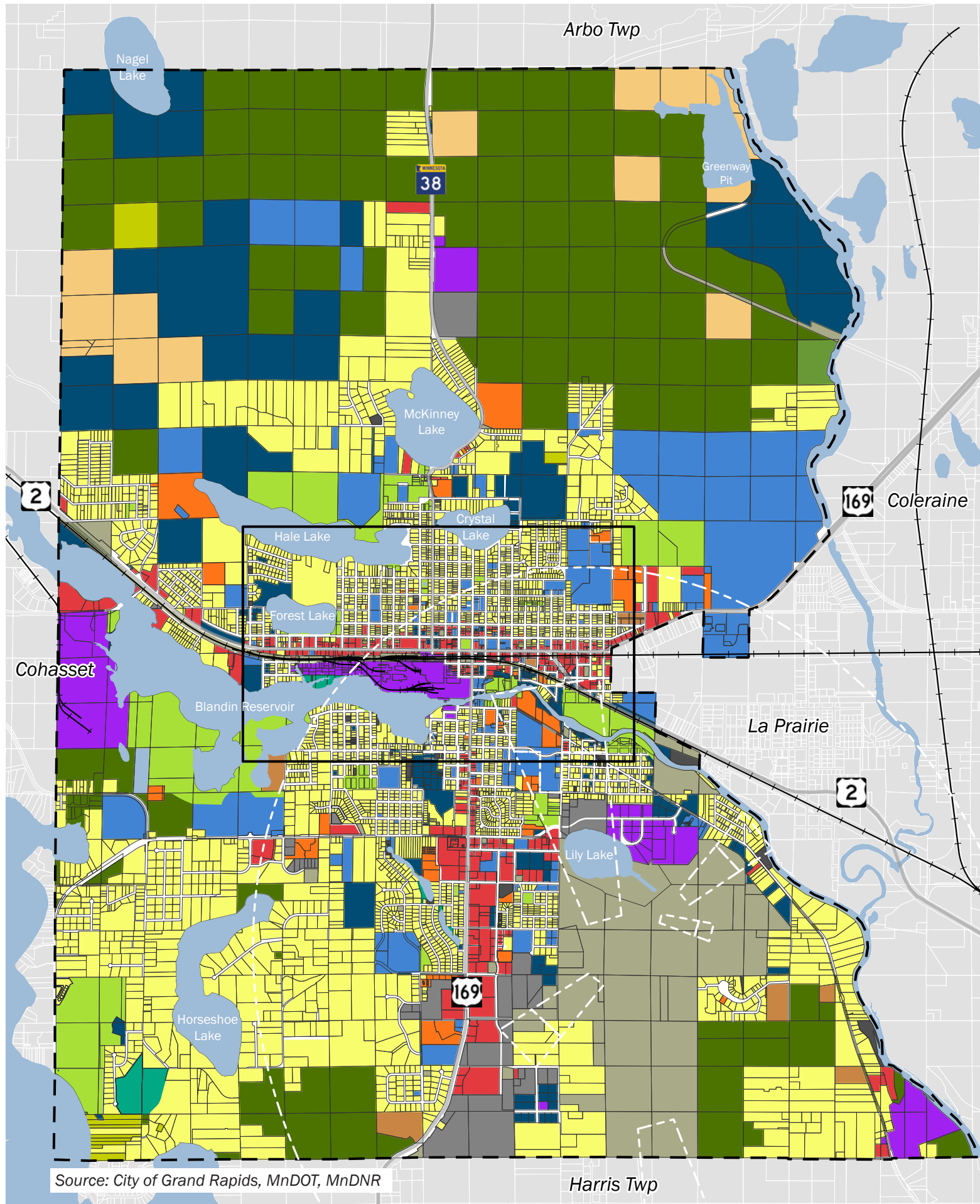
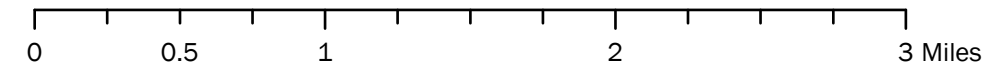


Figure 4.3 - Existing Land Use



- | | | |
|------------------------|------------------------------|--------------------------|
| Agriculture | Public Lands | Airport Zones |
| Commercial | Residential | Grand Rapids City Limits |
| Forestry | Residential - Multifamily | Railroads |
| Industrial | Residential - Seasonal | Highways |
| Institutional | Right-of-Way | |
| Manufactured Home Park | Tax Forfeit - Vacant | |
| Mining and Extractive | Transportation and Utilities | |
| Open Water | Vacant or Undeveloped | |
| Parks and Open Space | Constrained Open Space | |



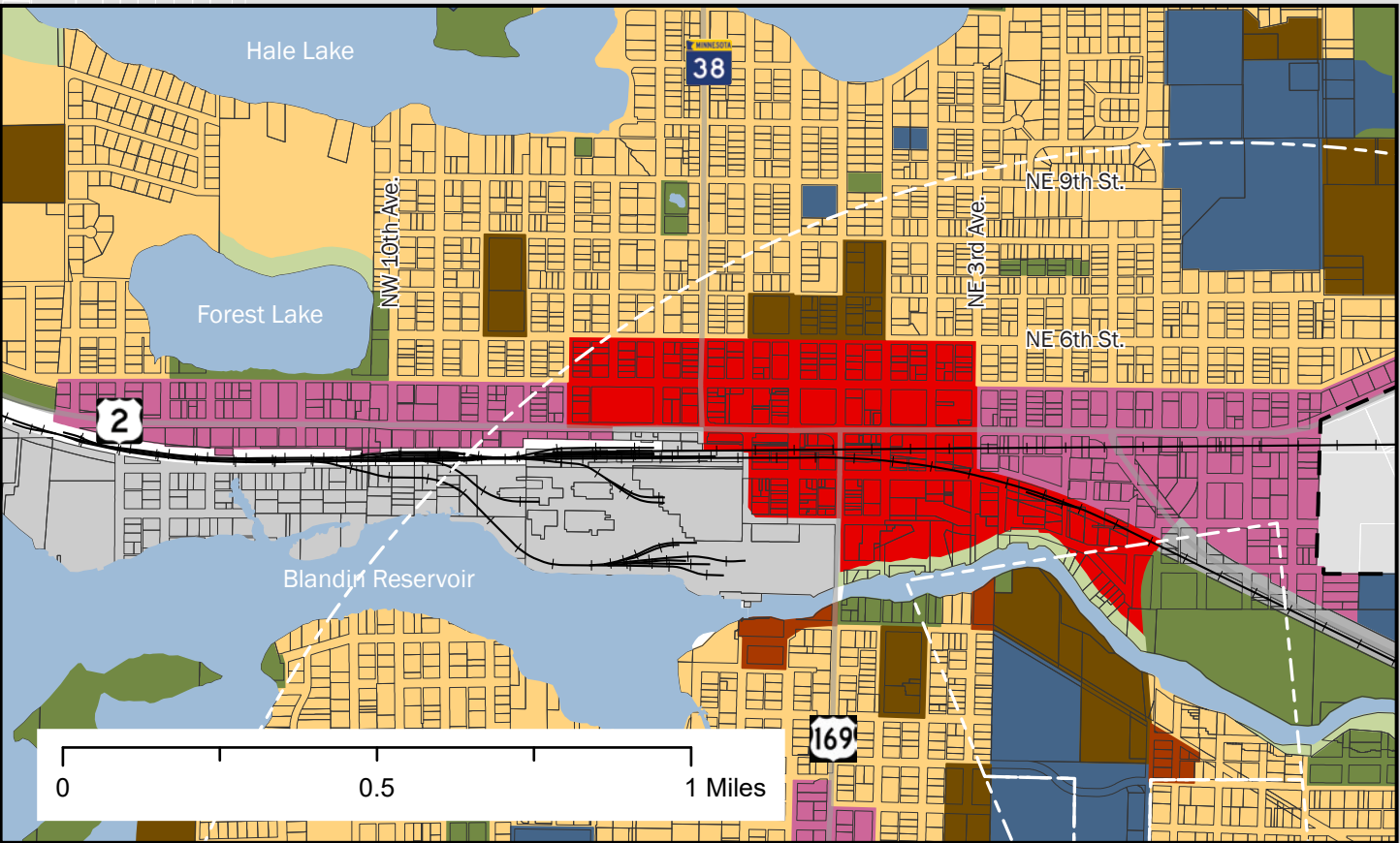
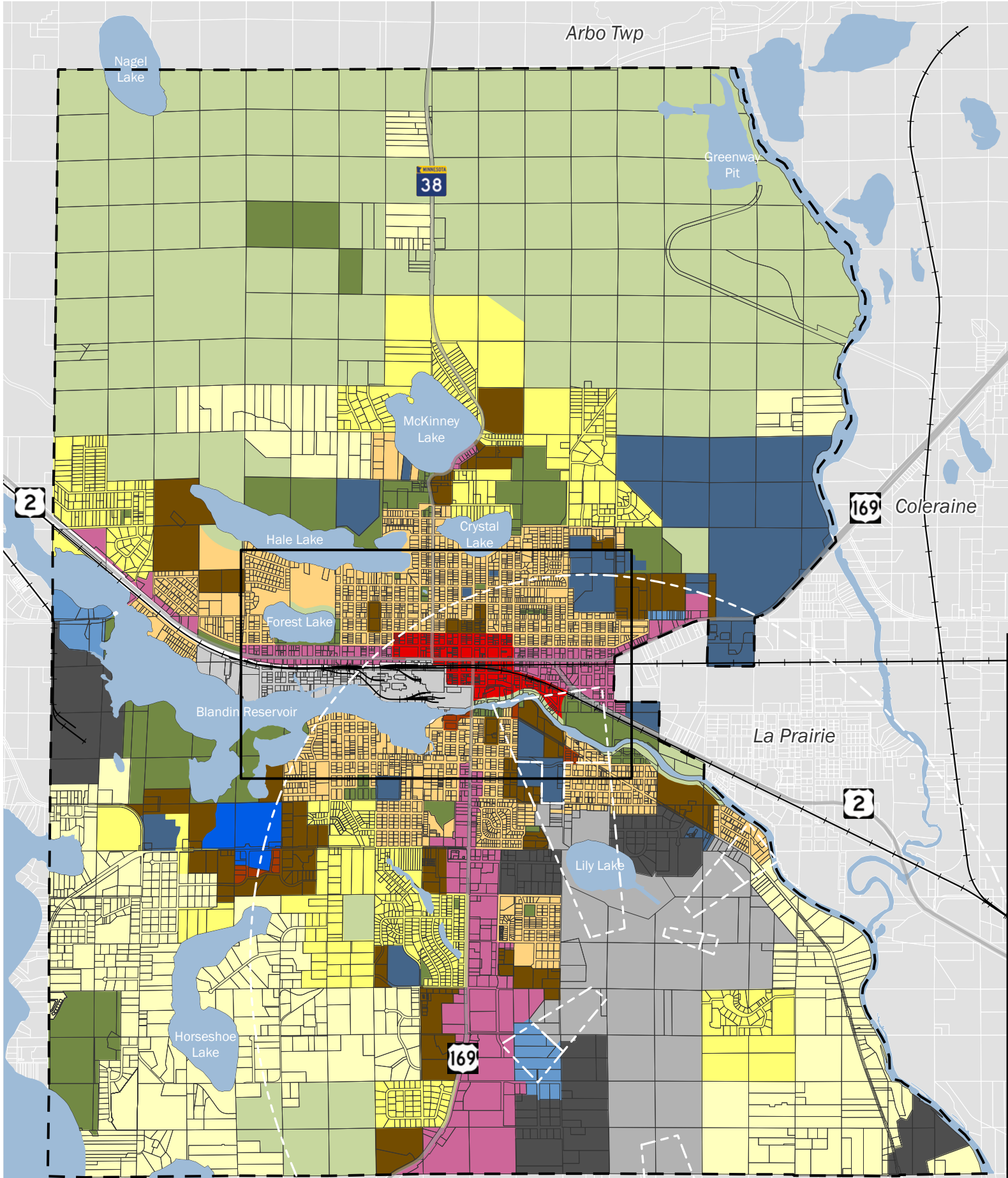
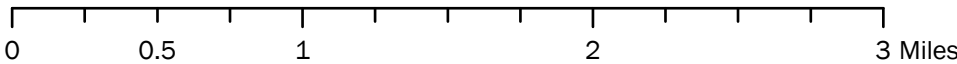
Source: City of Grand Rapids, MnDOT, MnDNR

Harris Twp

Figure 4.8 - Future Land Use



- | | | |
|------------------------|------------------------------|-----------------------------|
| Highway Commercial | Medical Campus | Airport Zones |
| Downtown Mixed Use | Parks and Recreation | Grand Rapids City Limits |
| Neighborhood Mixed Use | Resource Management | Railroads |
| Industrial-Traditional | Rural Residential | Highways |
| Industrial Park | Suburban Residential | Lakes, Rivers, or Mine Pits |
| Business Park | Traditional Neighborhood | |
| Institutional/Civic | Multi-Family Residential | |
| | Transportation and Utilities | |



Source: City of Grand Rapids, MnDOT, MnDNR

Harris Twp

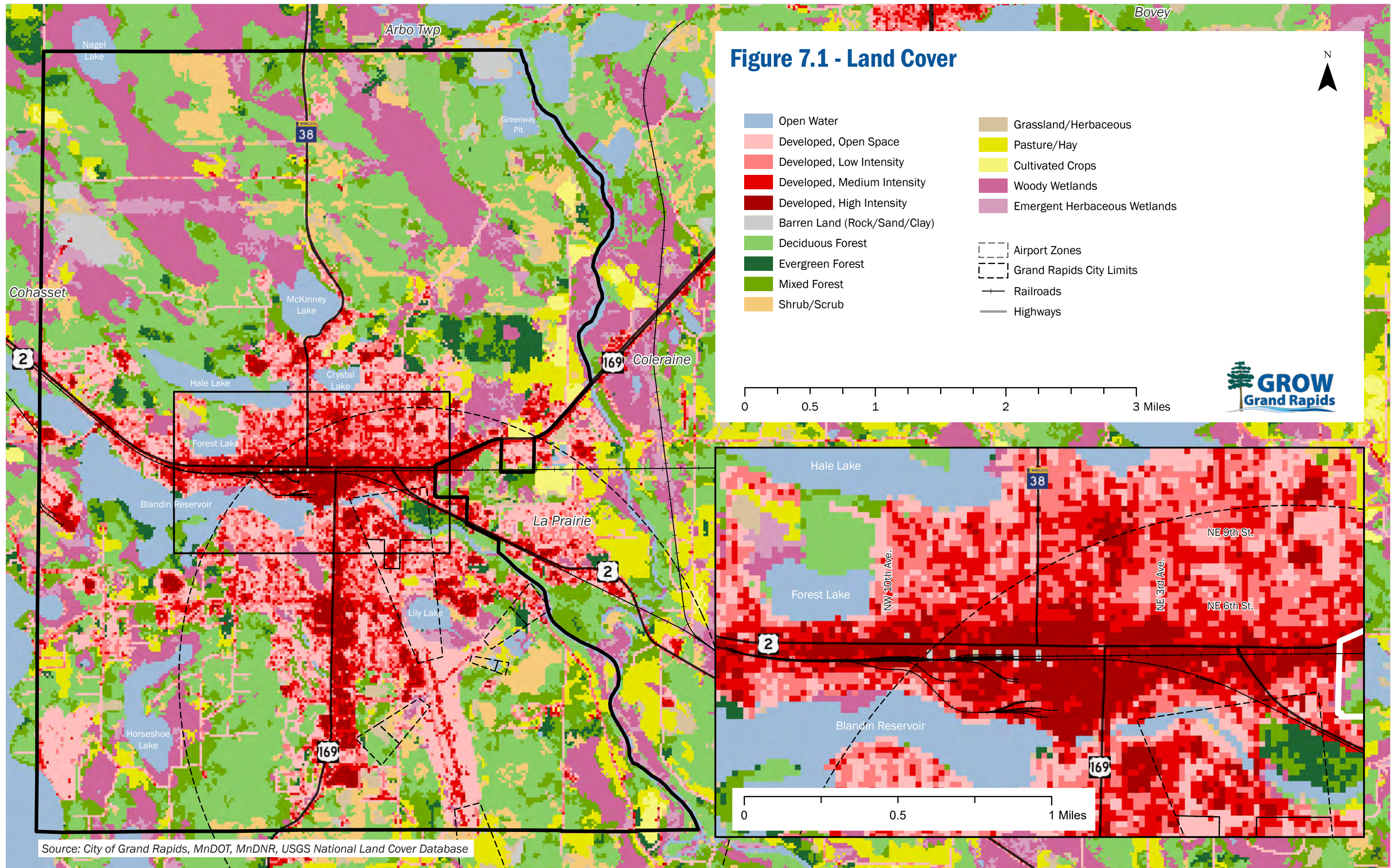



Figure 7.1 - Land Cover

- | | |
|--|--|
|  Open Water |  Grassland/Herbaceous |
|  Developed, Open Space |  Pasture/Hay |
|  Developed, Low Intensity |  Cultivated Crops |
|  Developed, Medium Intensity |  Woody Wetlands |
|  Developed, High Intensity |  Emergent Herbaceous Wetlands |
|  Barren Land (Rock/Sand/Clay) |  Airport Zones |
|  Deciduous Forest |  Grand Rapids City Limits |
|  Evergreen Forest |  Railroads |
|  Mixed Forest |  Highways |
|  Shrub/Scrub | |

0 0.5 1 2 3 Miles



Source: City of Grand Rapids, MnDOT, MnDNR, USGS National Land Cover Database

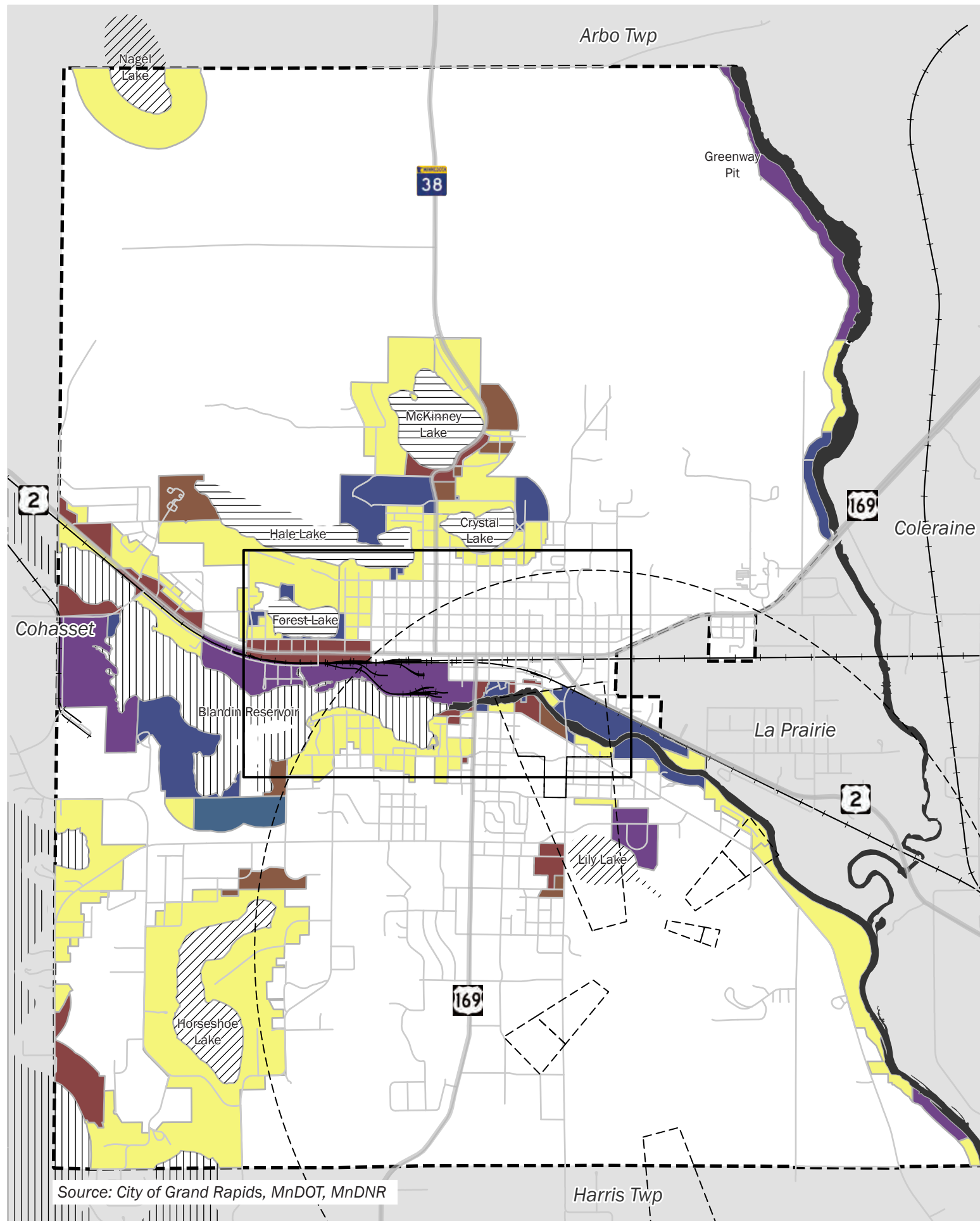


Figure 7.2 - Shoreland Overlay



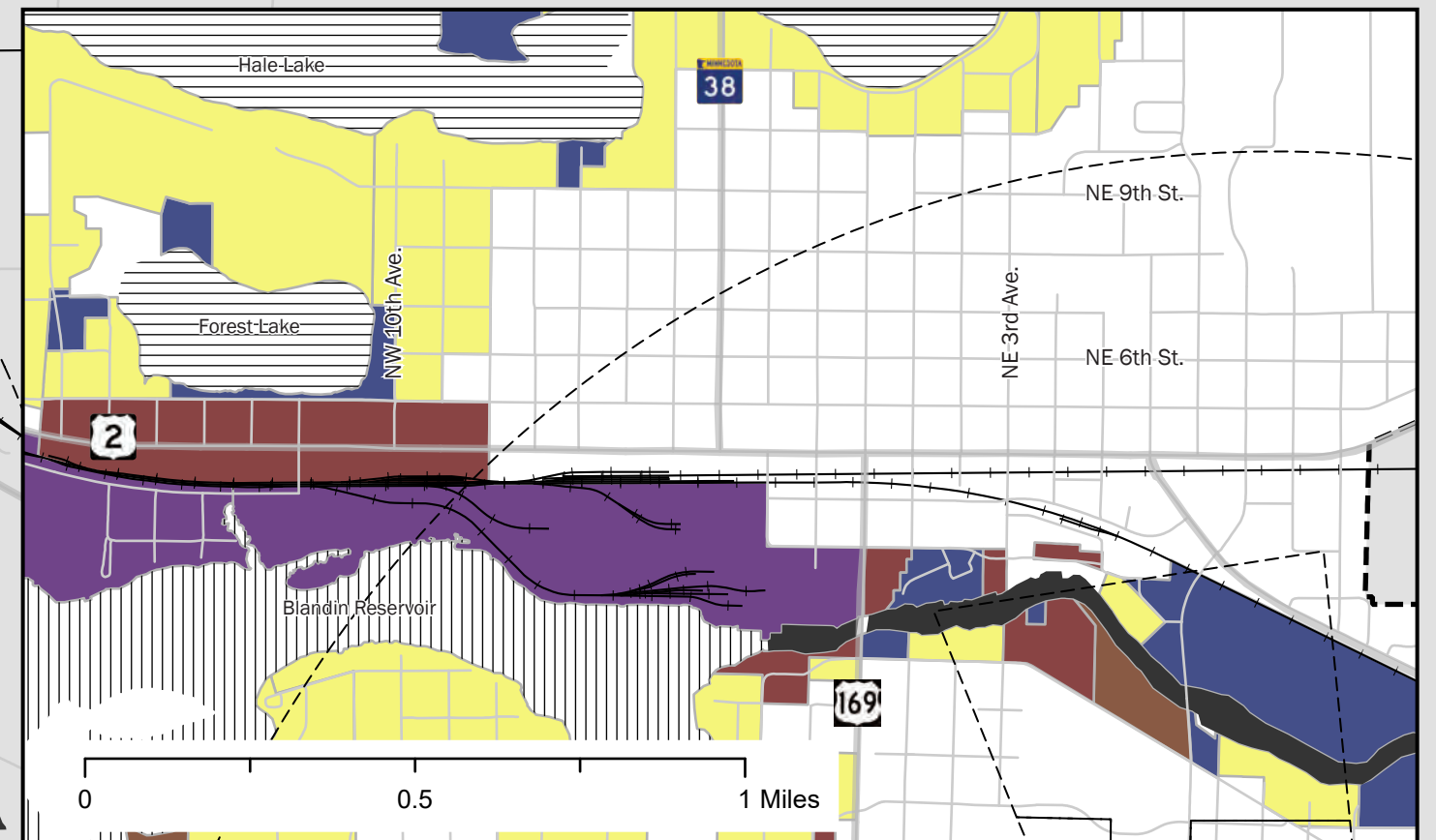
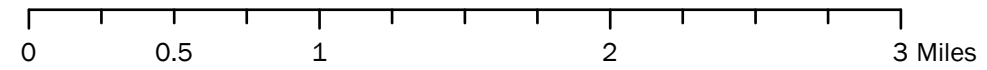
MnDNR Lake Classifications

- General Development
- Natural Environment
- Recreational Development

- Airport Zone
- Grand Rapids City Limits
- Railroads
- Highways
- Rivers

Grand Rapids Shoreland Zoning Districts

- Retail and Commercial District
- Industrial District
- Institutional District
- Multi-family and High Density Residence District
- Rural, Single, and Two-Family Residence District
- Public Use District



Source: City of Grand Rapids, MnDOT, MnDNR